

## 3 soverom Villa i La Sella Golf Resort

### Referanse

D694095

### Virksomhet

For sale

### Type eiendom

Resale

### Beliggenhet

### Type hus

### Soverom / Bad

3 / 2

### Størrelse

206 m<sup>2</sup> Build / 1228 m<sup>2</sup> tomt

### Pris

1,390,000









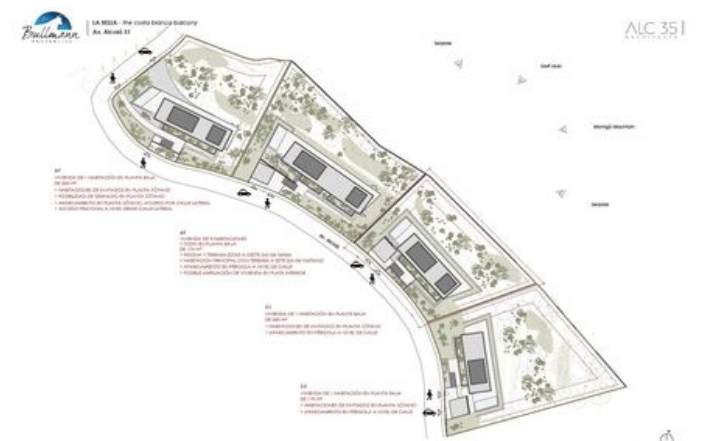
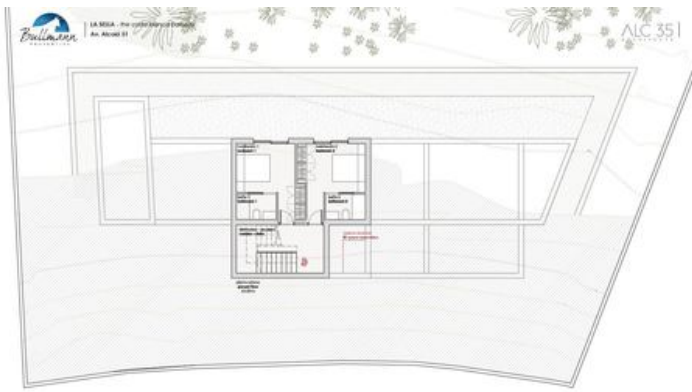
Bullmann  
LA BELLA - the coastal elegance  
Av. Alcalá 51

ALC 35 |  
ALCALÁ 51



Bullmann  
LA BELLA - the coastal elegance  
Av. Alcalá 51

ALC 35 |  
ALCALÁ 51



Bullmann  
LA BELLA - the coastal elegance  
Av. Alcalá 51

ALC 35 |  
ALCALÁ 51

Bullmann  
LA BELLA - the coastal elegance  
Av. Alcalá 51

ALC 35 |  
ALCALÁ 51



Some of the main attractions near are:

San Sebastián is a traditional coastal city of 192,000 inhabitants, international with a large fishing port with daily long queues for the Market. It is the capital of the Basque Area declared by UNESCO "World Heritage City". There are panoramic views, such as the "Mirador de Urbieta" with the "Castro de Urbieta" with the "Castro de Urbieta". There is a large "La Vitoria Park" with the "Castro de Urbieta".

North of San Sebastián is a long sandy beach, 1200 m long, with a wide and shallow water area and a wide beach area. It is the "Mirador de Urbieta" with the "Castro de Urbieta". There is a large "La Vitoria Park" with the "Castro de Urbieta".

San Sebastián is a coastal city of 192,000 inhabitants, international with a large fishing port with daily long queues for the Market. It is the capital of the Basque Area declared by UNESCO "World Heritage City". There are panoramic views, such as the "Mirador de Urbieta" with the "Castro de Urbieta". There is a large "La Vitoria Park" with the "Castro de Urbieta".

San Sebastián is a coastal city of 192,000 inhabitants, international with a large fishing port with daily long queues for the Market. It is the capital of the Basque Area declared by UNESCO "World Heritage City". There are panoramic views, such as the "Mirador de Urbieta" with the "Castro de Urbieta". There is a large "La Vitoria Park" with the "Castro de Urbieta".

Bullmann  
LA BELLA - the coastal elegance  
Av. Alcalá 51

ALC 35 |  
ALCALÁ 51



Medium-toned materials | Wooden warm details | Contemporary design | Interior-external connection | Ambiente del proyecto | Project look and feel